

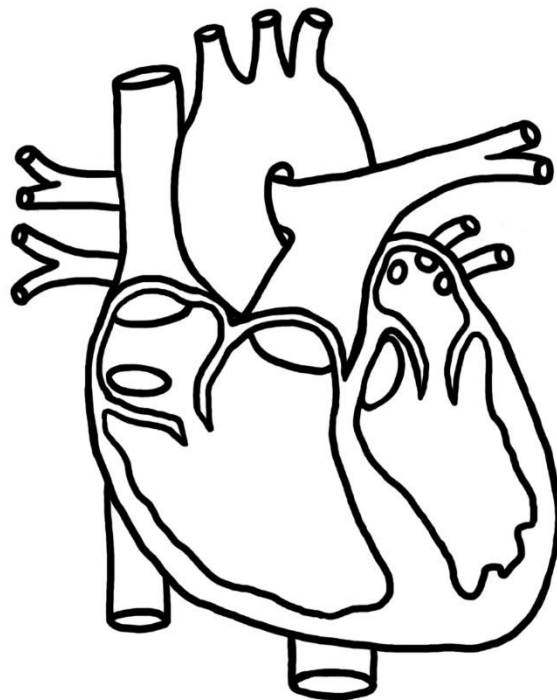
33-1 pg. 948-953

1. What is the transportation system of a living organism?

2. What does the circulatory system consist of?

4. a. Label the parts of the heart: right atrium, left atrium, right ventricle, left ventricle, superior & inferior vena cava, pulmonary artery, pulmonary veins, aorta

- b. Indicate blood flow. Label which type of blood is going where.



5. List the 3 types of blood vessels and their function

1.

2.

3.

37-3 pg. 963-969

6. What is the basic function of the respiratory system?

7. Put the following parts of the respiratory system in the correct order if you are following oxygen from the environment to the blood:

trachea, pharynx, nose, larynx, alveoli, bronchioles, bronchi

8. Provide the functions for each of the above parts of the respiratory system.

9. Why does oxygen diffuse into the blood at the alveoli & carbon dioxide diffuse out of the blood?

34.1 pg. 978-981

10. What makes up the endocrine system?

34.2 pg. 982-987

11. How are endocrine glands controlled?