

How Populations Grow

ISN pg. 55

1. Factors that Affect Pop. Size

- a. Immigration/Emigration
- b. # of births
- c. # of deaths

2. Types of Pop. Growth

Exponential

- pop. grows continuously
- reproduce at a constant rate

Due to: Ideal Expectations

- No predators
- No competition
- Unlimited resources (food, space, sun)
- No diseases
- No nat'l disasters
- No human activity

Logistic

- pop. growth stops or slows down
- When carrying capacity is reached - the # of organisms an ecosystem can support

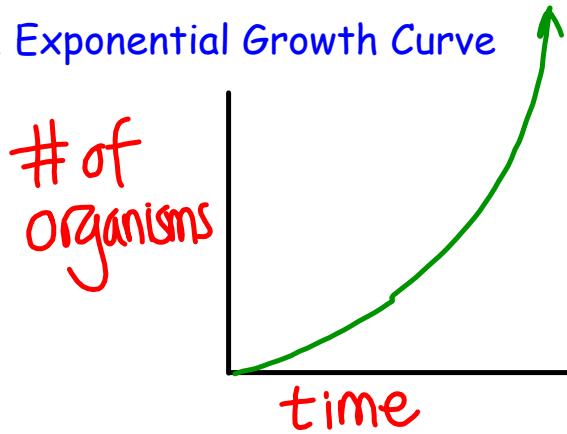
Due to:

- Predators
- Competition
- Limited resources
- Disease
- Nat'l disasters
- Human activities

Population Growth Curves

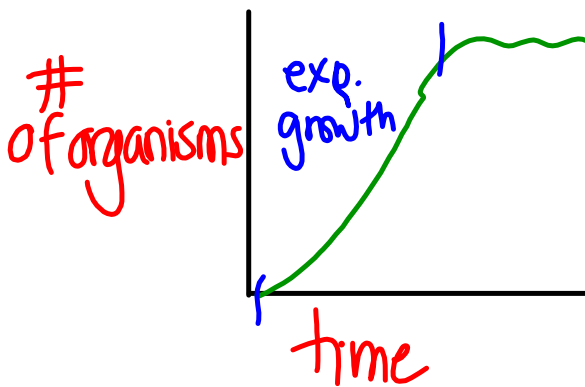
ISN pg. 56

1. Exponential Growth Curve



J-curve

2. Logistic Growth Curve



carrying capacity